

Installation and user guide for Sony Mobile Repair Application

Contents

| | |
|---|----|
| Introduction | 1 |
| Preparations..... | 2 |
| Start Sony Mobile Repair Application | 3 |
| Driver installation..... | 4 |
| Description how to connect..... | 9 |
| Device calibration | 10 |
| Save user settings in OS ETS..... | 15 |
| Install Battery test app..... | 16 |
| Uninstall and Collect Battery Test log..... | 18 |
| Error messages..... | 20 |

Introduction

The purpose of this guide is to show how to use Sony Mobile Repair Application.

Sony Mobile Repair Application is a tool to calibrate and test devices through ETS software and Android Operating System

This tool will replace all Trouble Shooting Applications 1257-2706, 1262-6643, 1269-2060 and 1276-8378 and Sony Mobile Battery test Application 1266-2711.

Preparations

Make sure the system fulfill the minimum requirements.

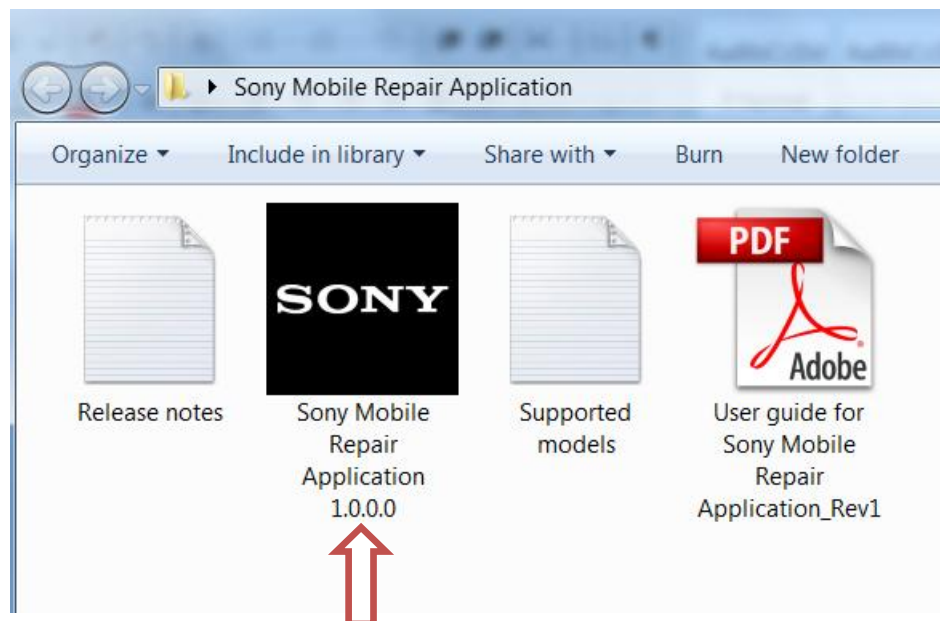
| Components | System Requirements |
|-------------------|-----------------------------------|
| Operating System | Windows 7 (32 or 64-bit) or later |
| Memory(RAM) | 64mb free ram |
| Storage | 10mb free HDD space |
| Screen Resolution | Widescreen resolution |
| Peripherals | Free USB port |

Please note Windows Vista and Windows XP is **not** supported.

Note: In Computer settings deactivate all power savings.

Start Sony Mobile Repair Application

Locate and run “Sony Mobile Repair Application 1.x.x.x.exe”.



Driver installation

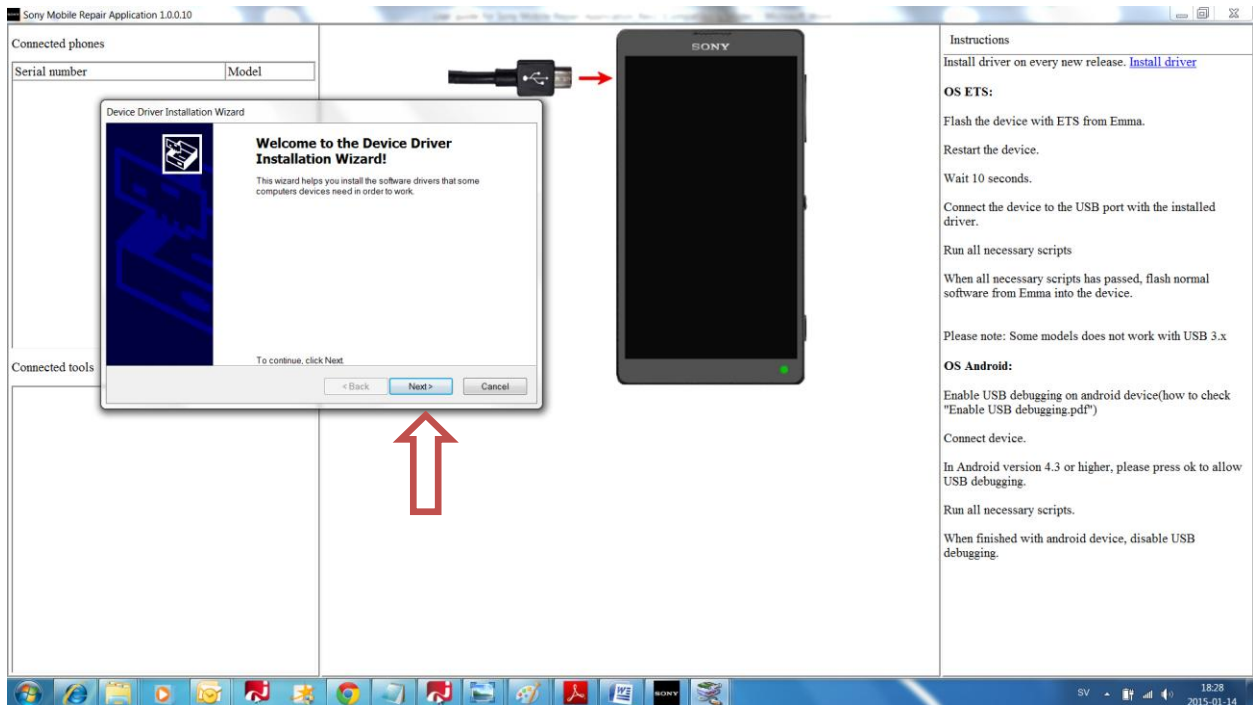
When application has started it will look like this. No devices connected to it.



A driver is needed for the application to recognize the device. It is possible to install the driver by clicking the blue “install driver” link. **Please install driver on every new release.**

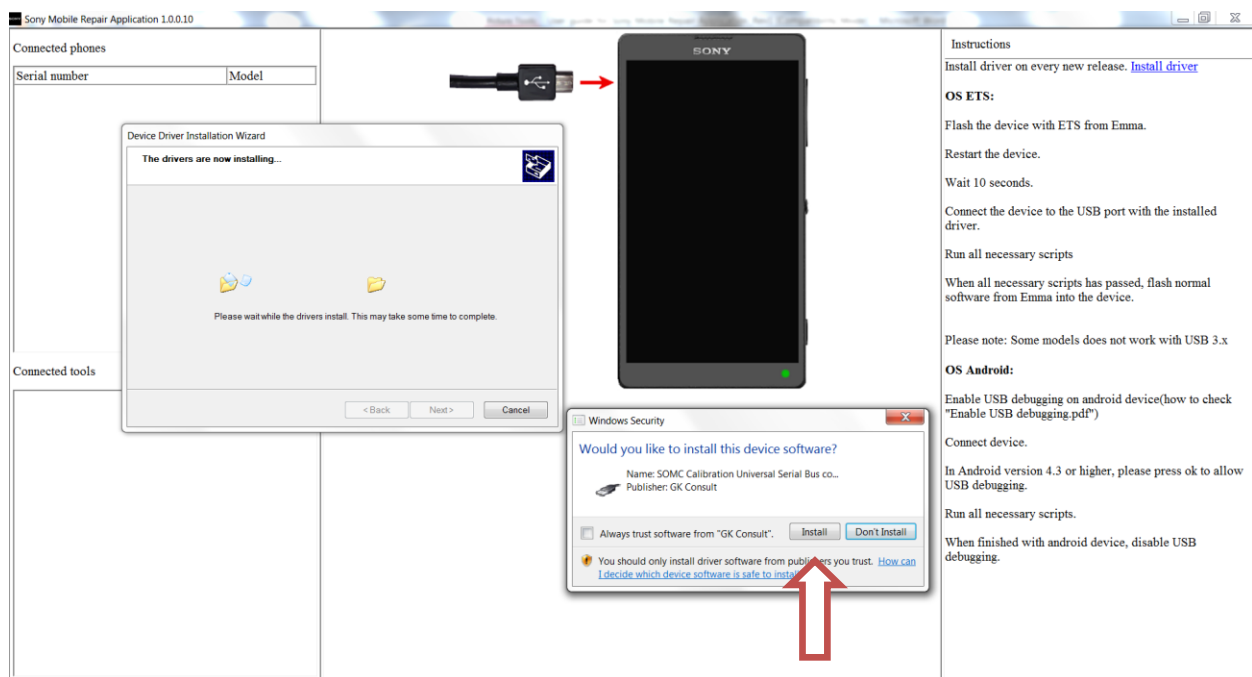
When install driver have been clicked. An installation wizard will start.

Click **Next** to continue installation.

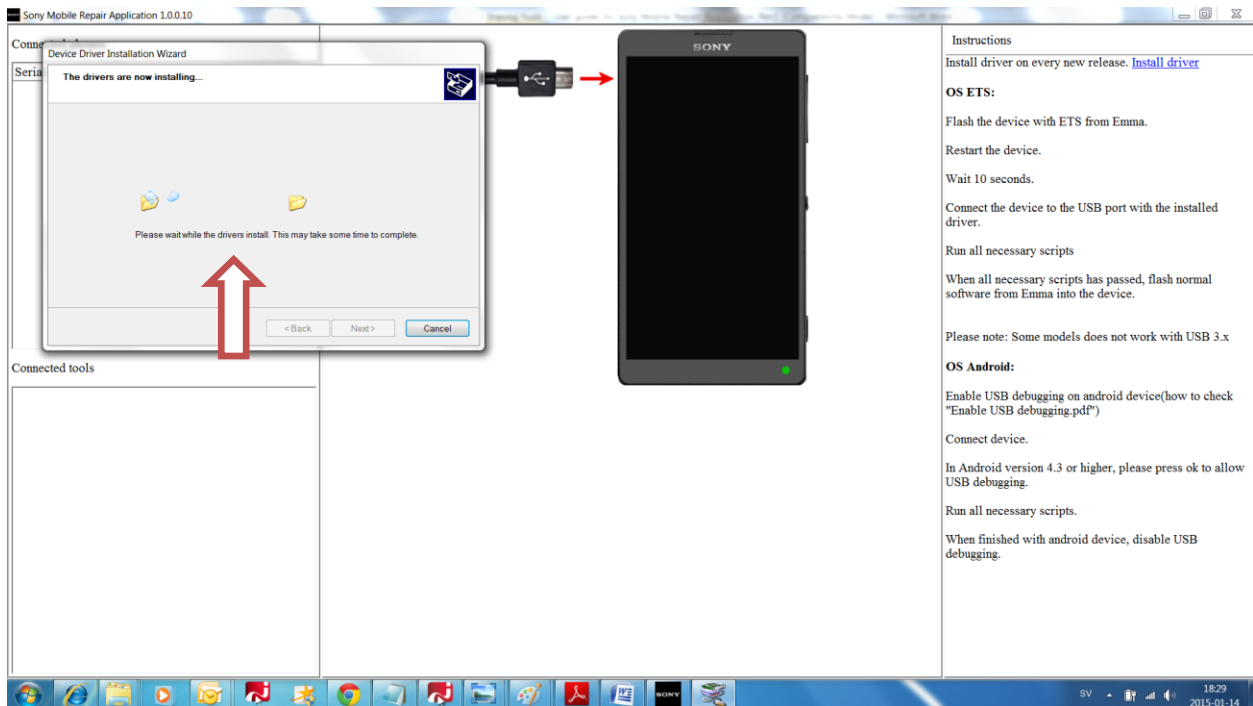


Depending on the windows security settings this message can pop up.

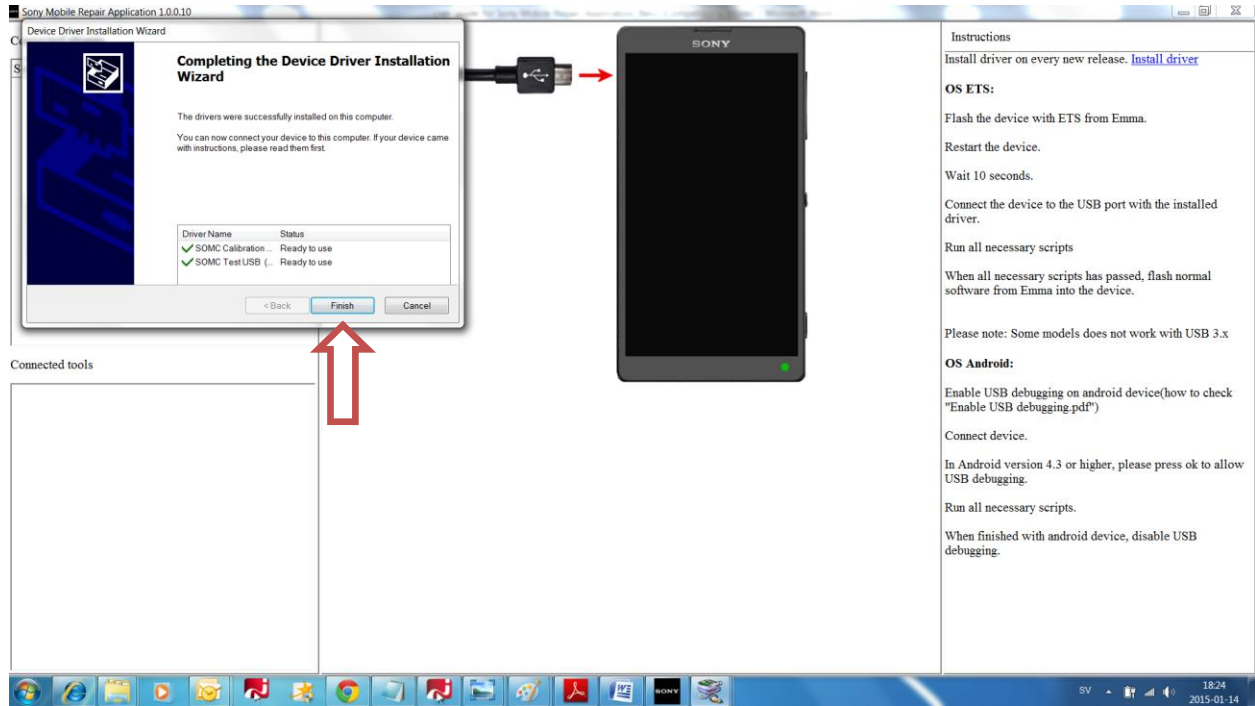
Click **Install** button



Wait for installation to complete.



When the driver is installed successfully, then click **Finish** button.

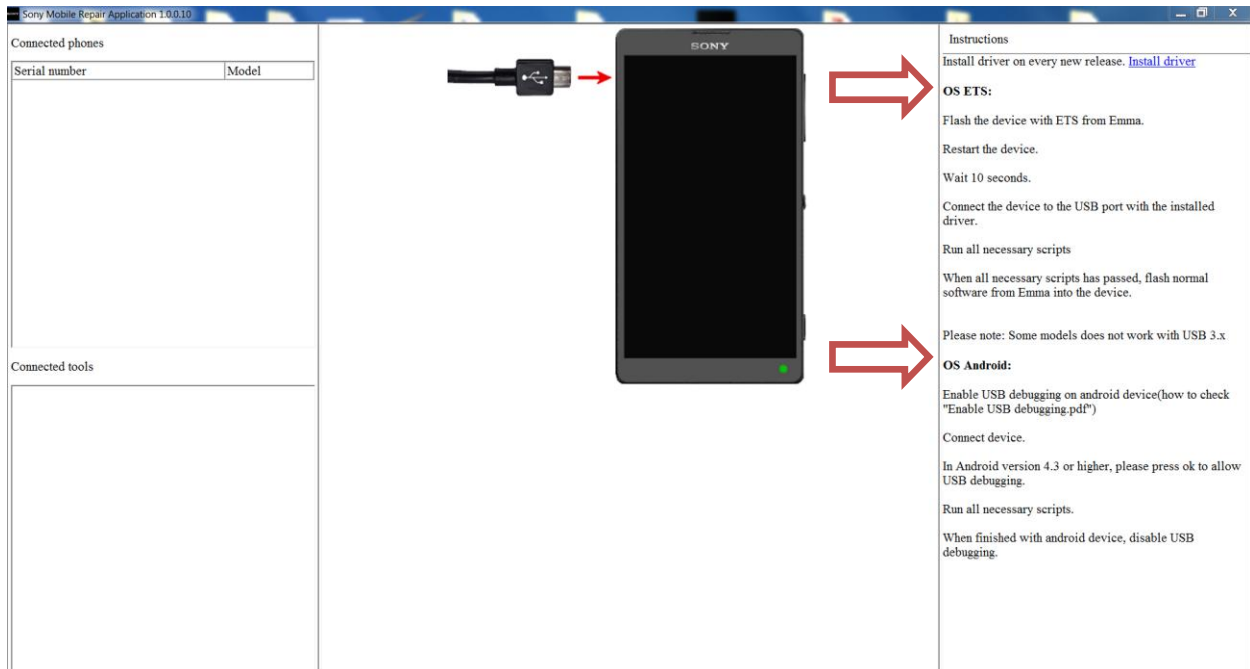


Description how to connect

In the instructions panel, is a description how to connect a device to the application.

OS ETS: Flash the device with ETS from Emma, Restart the device, Wait 10 seconds and then connect device to the USB port with the installed driver.

OS Android: Enable USB debugging connect USB and allow USB debugging on Android device.



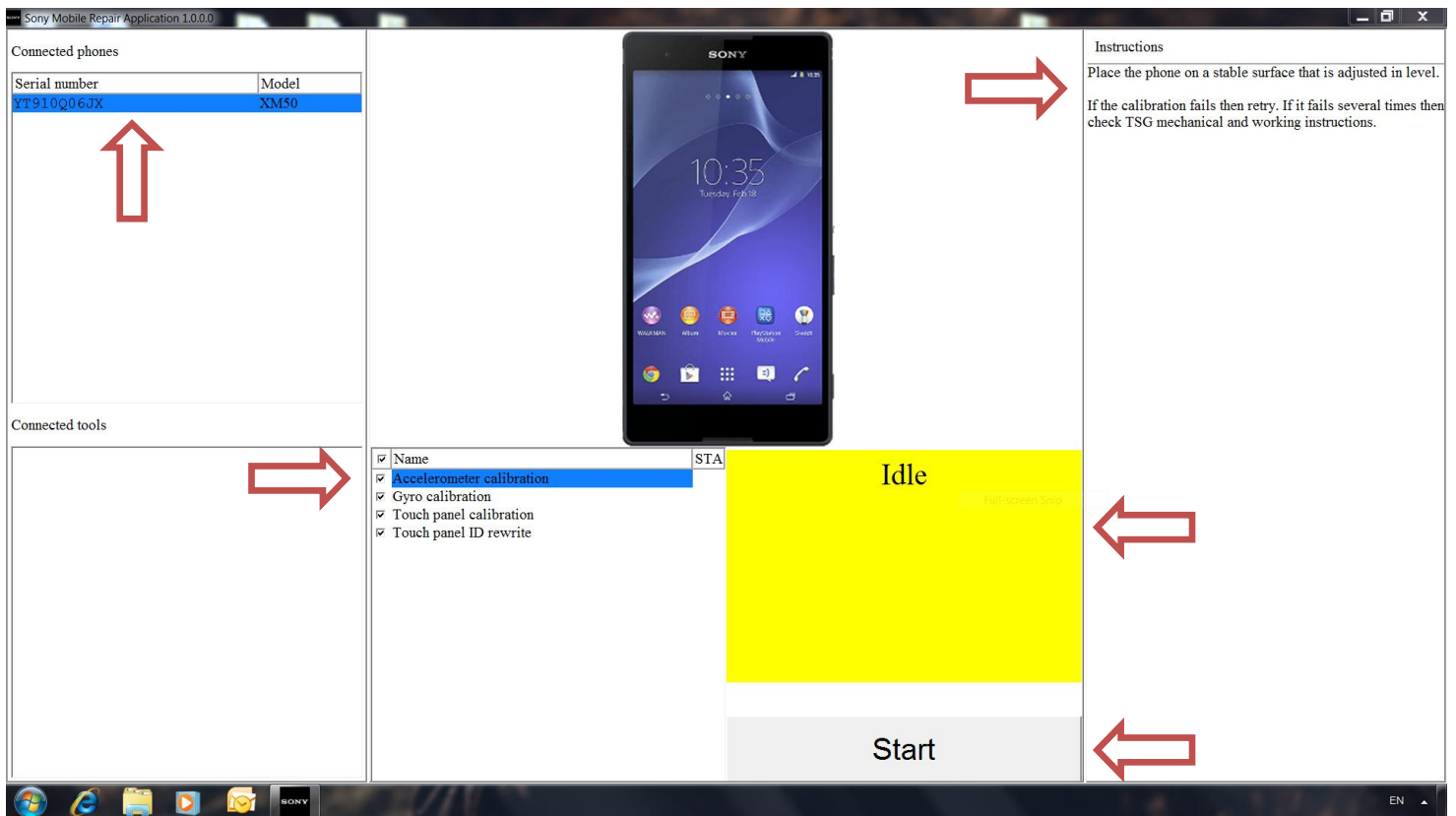
Device calibration

The device will be added to the connected phones as soon application recognizes a connected ETS device.

Note: The menu depends on model.

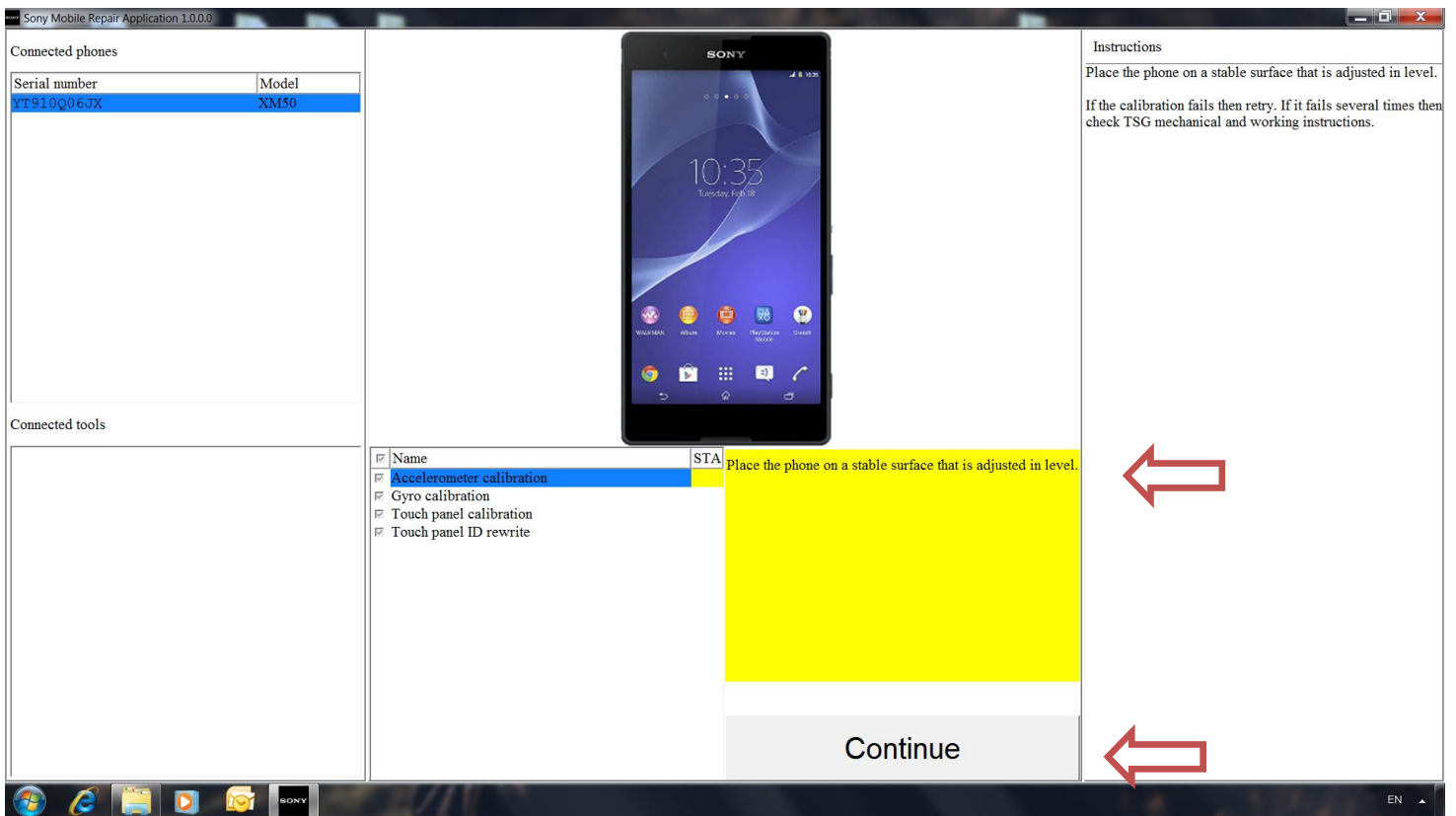
In detailed view the instructions for current selected script is shown.

Idle is shown in Status box. Click **Start** button to start calibration.

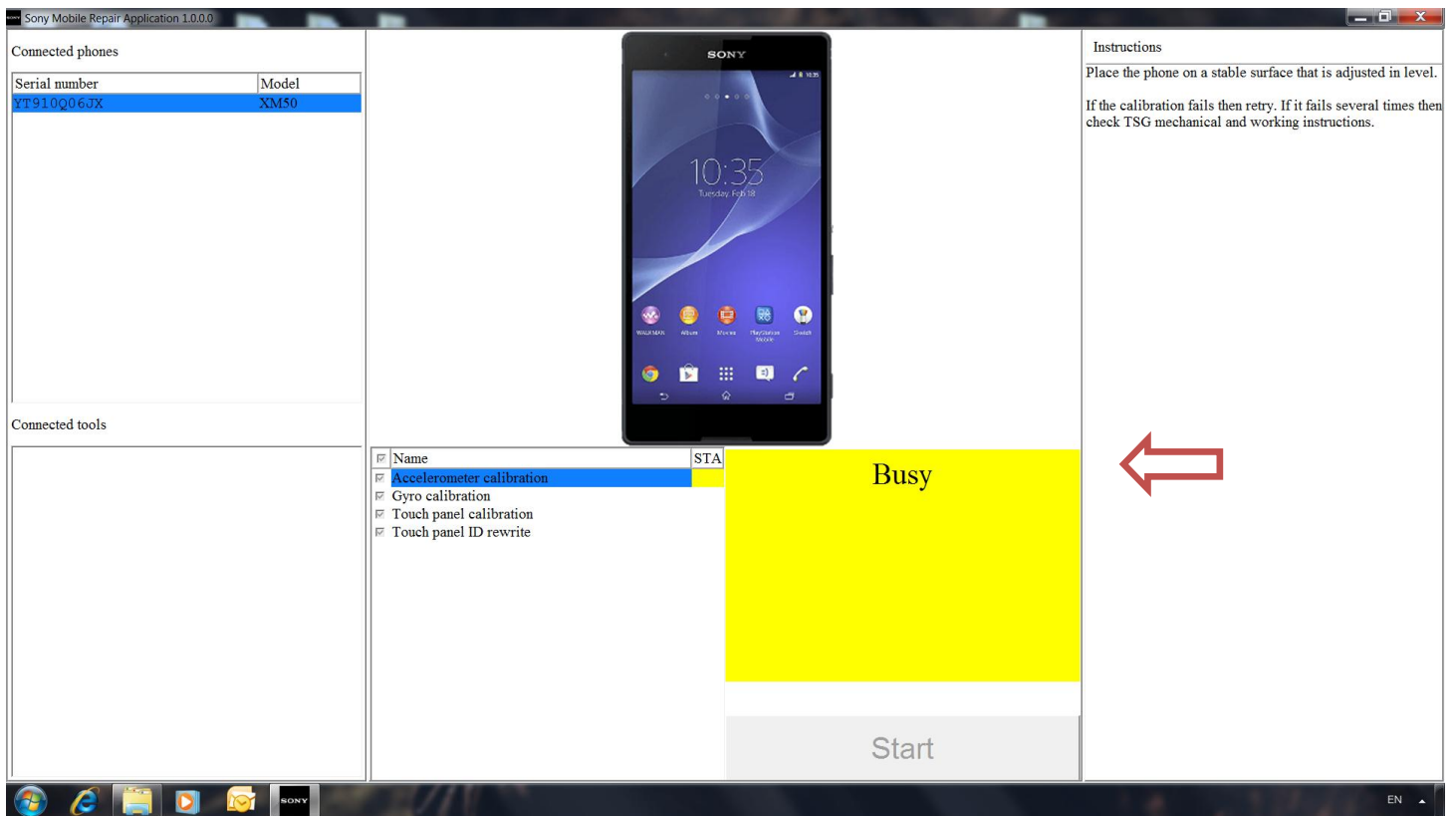


If the calibration needs a special condition, the application will warn about this in the status box.

When the condition is fulfilled, click the **Continue** button.

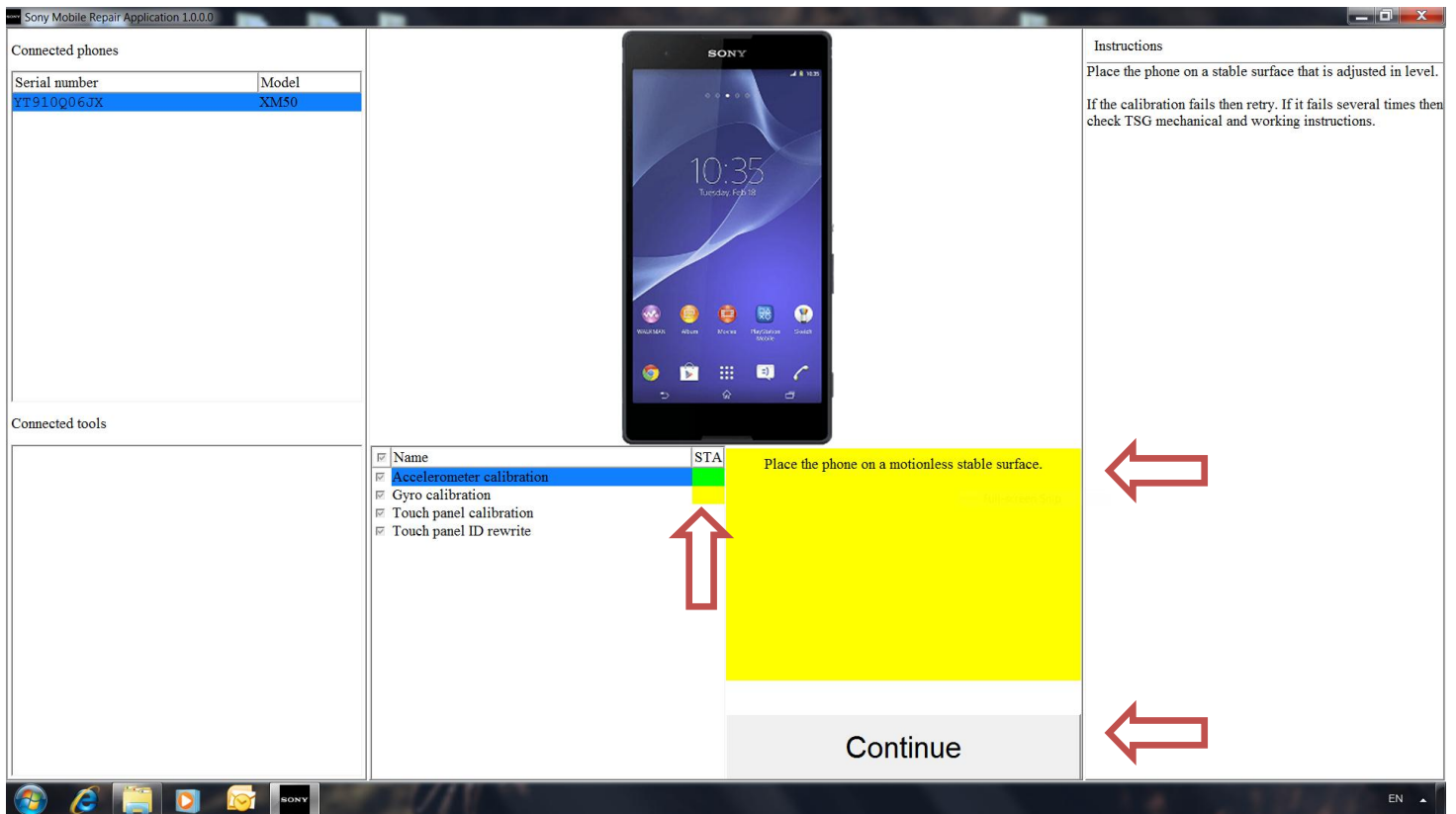


Busy is shown in the status box. It indicates that the device is under calibration.



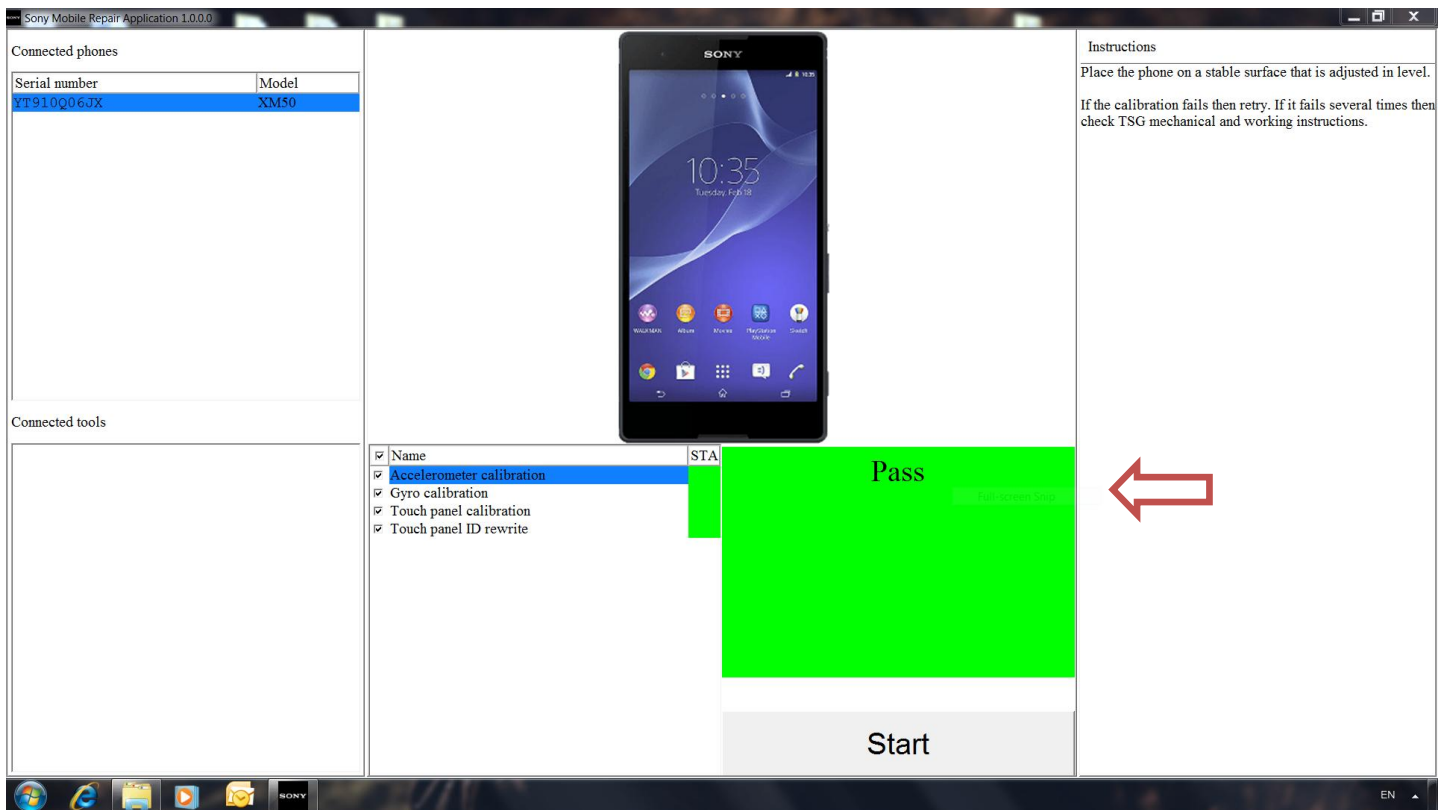
When the calibration is finished without error, the application will move to the next calibration in line.

When the condition is fulfilled, click the **Continue** button



When all calibrations are finished without error, the Status box will show “Pass”.

After all calibrations has passed then flash normal software from Emma into the device.



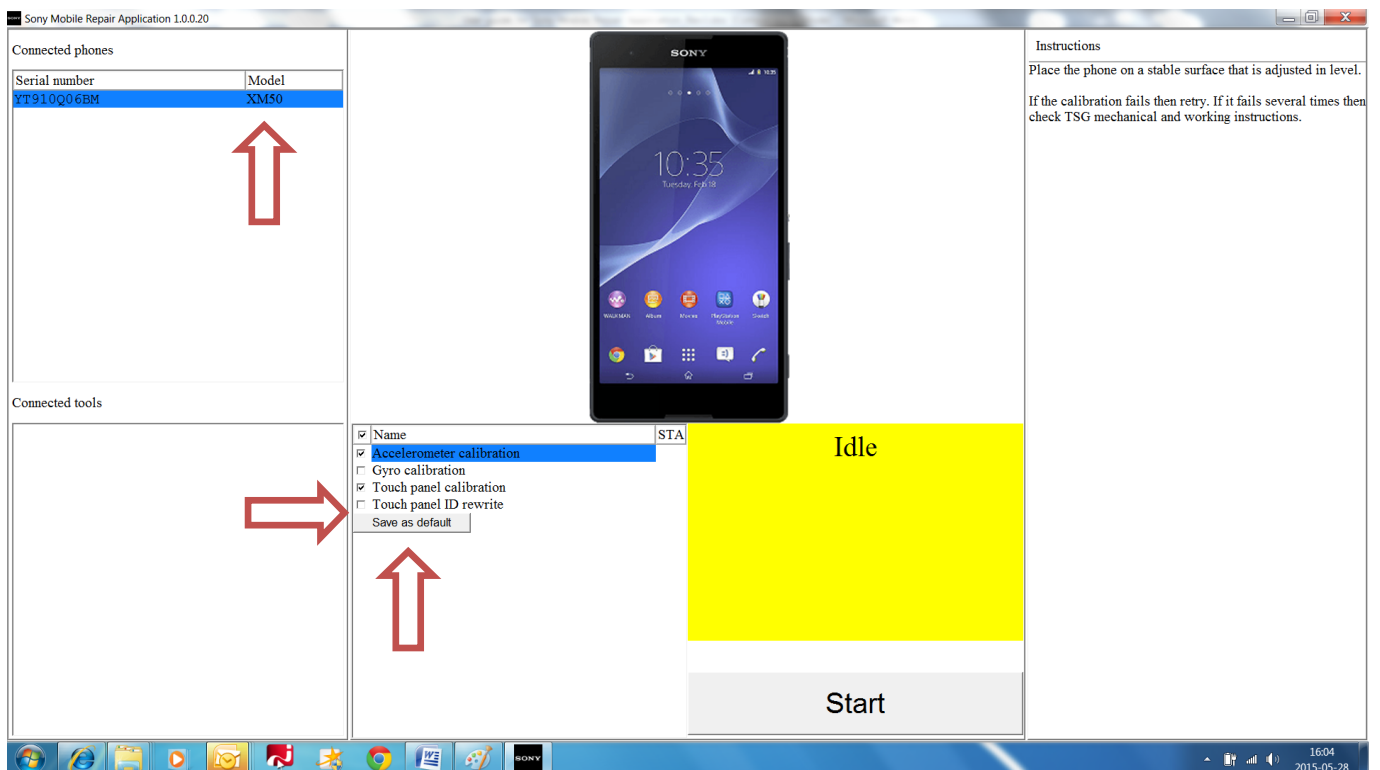
Save user settings in OS ETS.

The device will be added to the connected phones as soon application recognizes a connected ETS device.

From software rev 1.0.0.20 it's now possible to save user settings as default for all models.

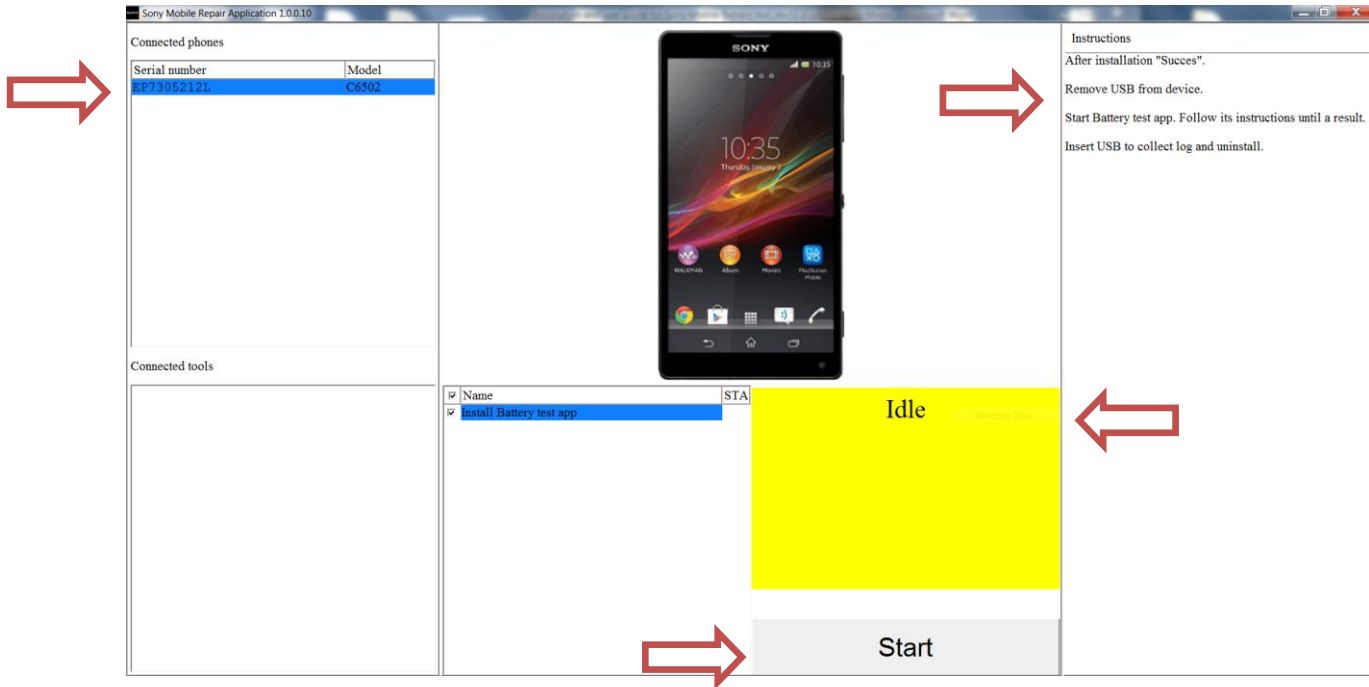
Select and press “Save as default”

Now user settings for this model are stored in local PC.



Install Battery test app.

The device will be added to the connected phones as soon application recognizes a connected Android device in USB debugging mode.

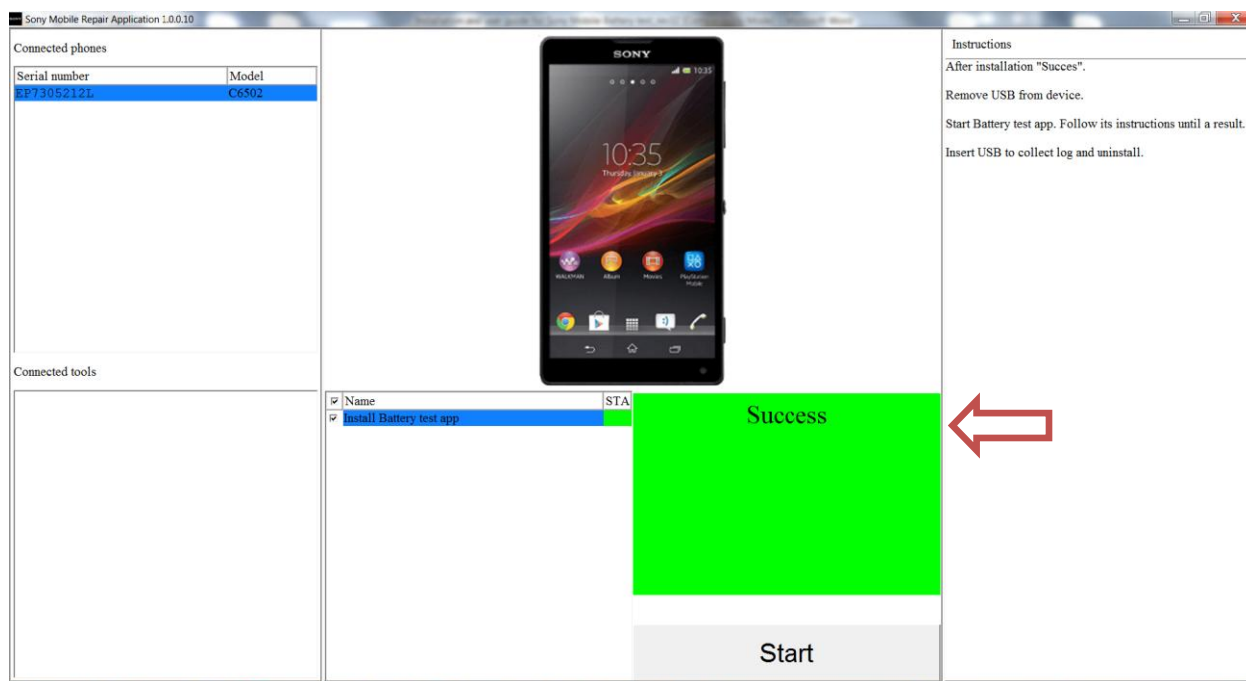


Instructions for current selected script are shown.

Idle is shown in Status box.

Click **Start** button to start Installation.

If Success, disconnect unit and run Battery Test application on device.

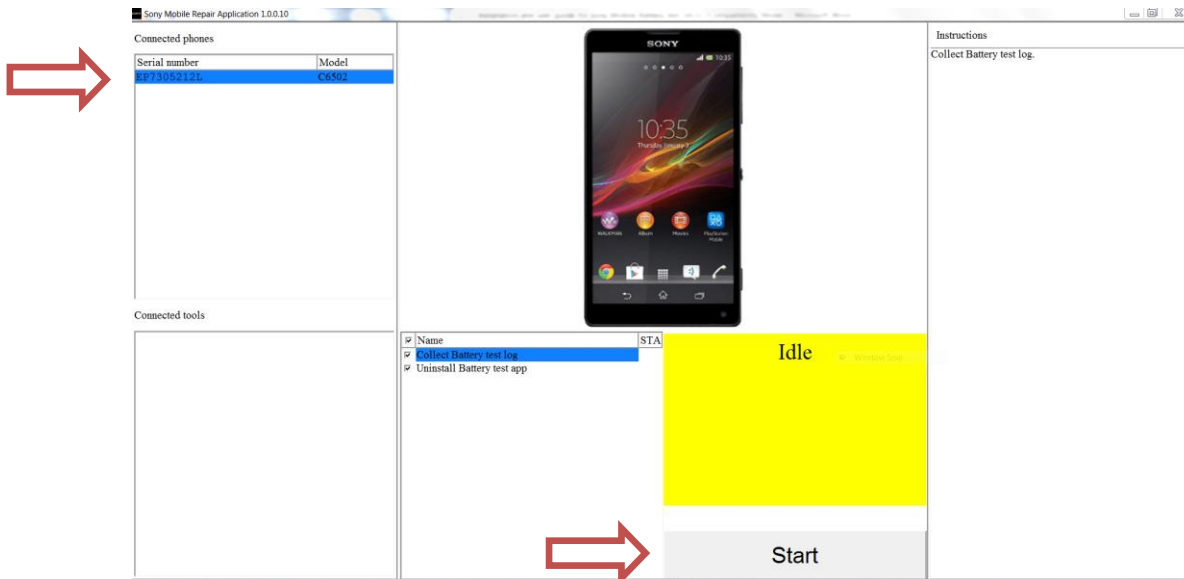


Uninstall and Collect Battery Test log.

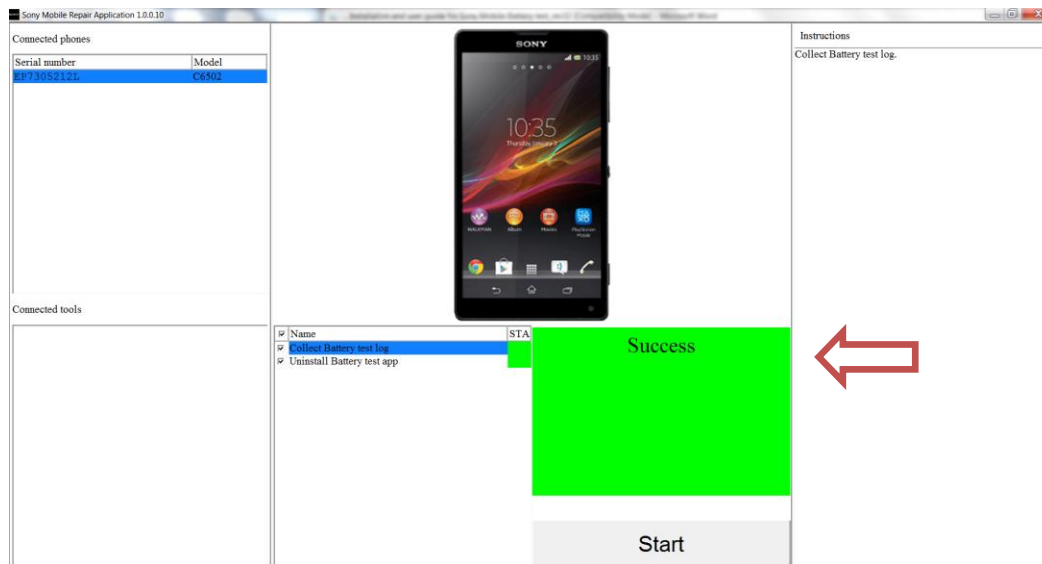
The device will be added to the connected phones as soon application recognizes a connected Android device in USB debugging mode.

If Battery Test has been performed on Android device **Collect Battery test log** will be shown.

Press Start to collect Battery test log and uninstall Battery test app.

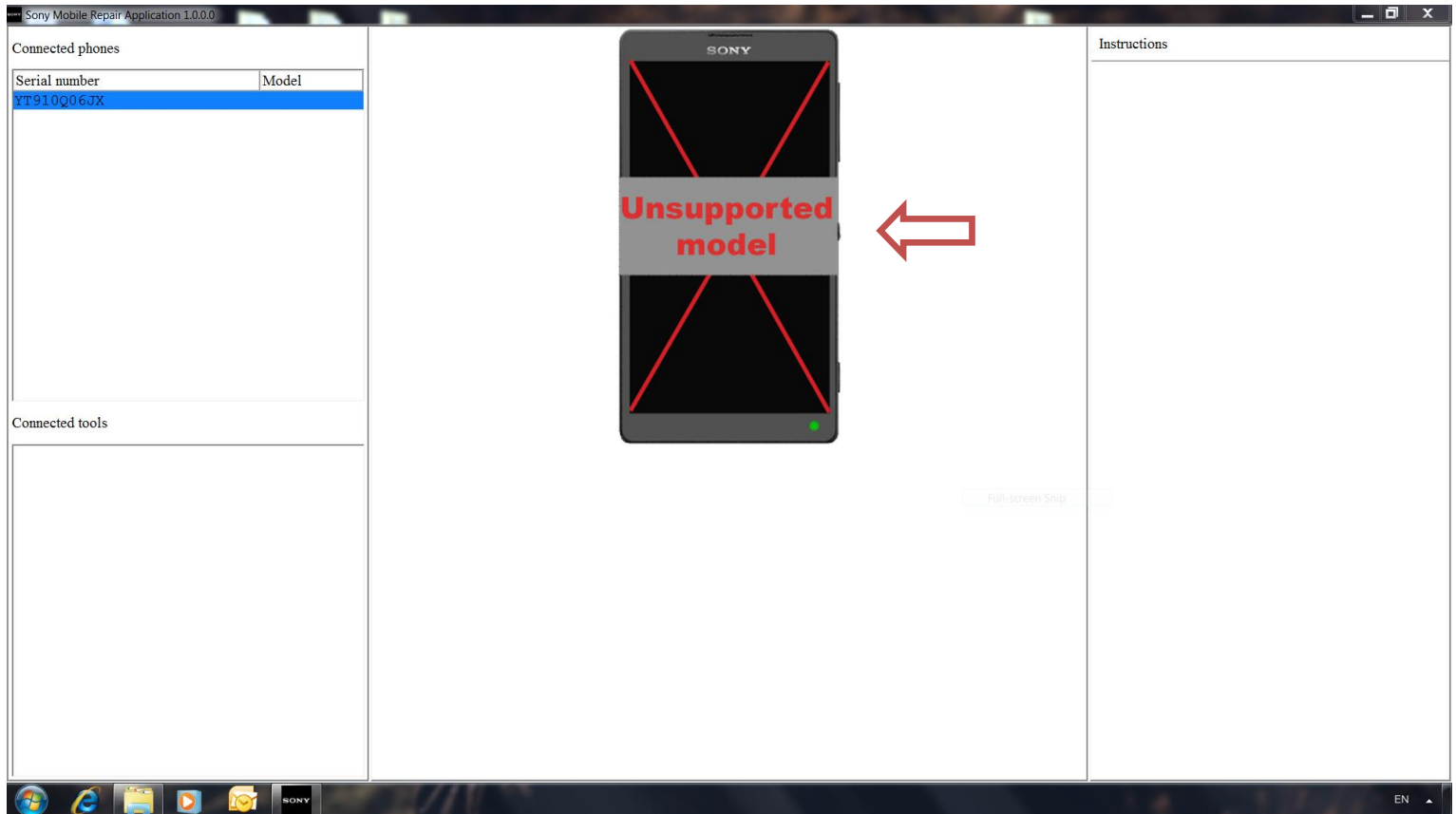


If Success, disconnect Android device.
Disable USB debugging.

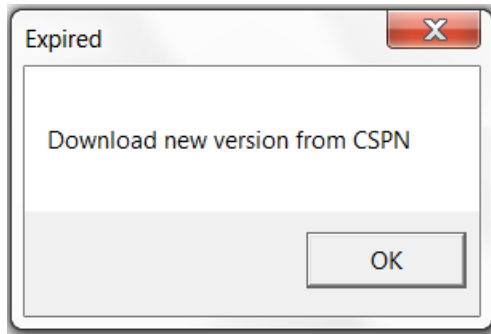


Error messages

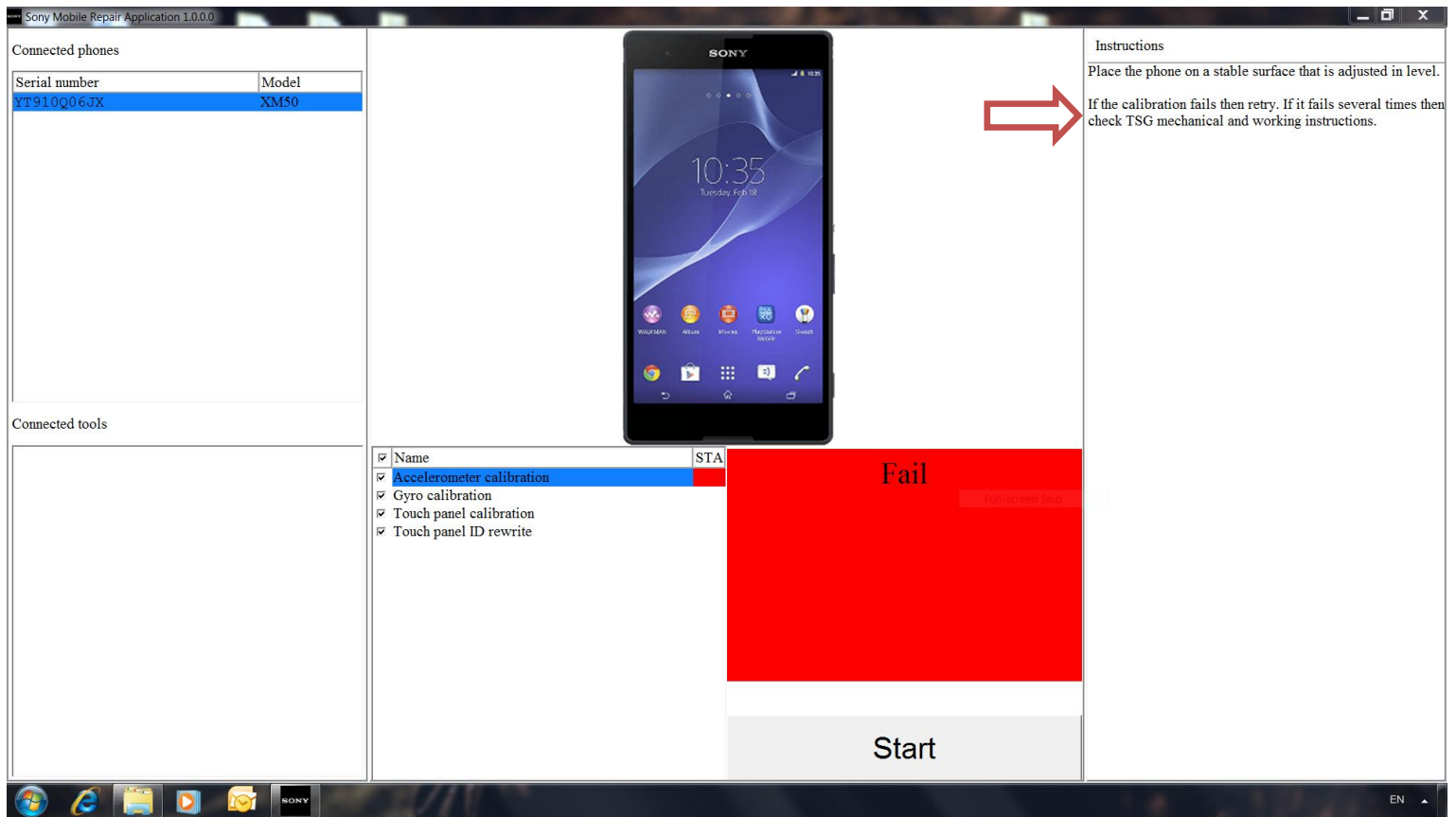
Note: In Computer settings deactivate all power savings.



If the connected device is not in phone library **Unsupported Model** will be shown,



Or if expired popup, then download new version from CSPN.



If calibration or test failed, then follow instructions from detailed view in the instructions panel.